



## Capital™ Advanced

Critical Care, Trauma  
& Post-Operative Cervical Collar

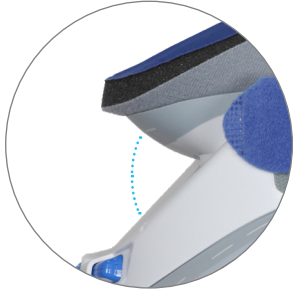
A new universal cervical collar that supports and stabilizes the head and neck after trauma or surgery. Designed for use in the most critical of care settings, the Capital™ Advanced cervical collar features innovative foam padding and soft flexible edges to help mitigate pressure and skin breakdown. With a patent-pending “pinch to size” mechanism, the Capital™ Advanced cervical collar offers clinicians an easy-to-use, more comfortable collar option for their post-operative and highly acute patients.





## Universal Height Adjustment

- Easy-to-use, pinch adjustment mechanism
- Faster sizing & adjustment
- Adjustment mechanism lock



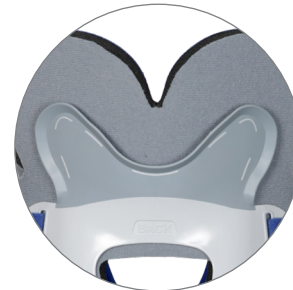
## Lower Height Setting

- Better accommodates short/no neck anatomy
- Better accommodates hyperkyphotic patients



## Innovative Padding

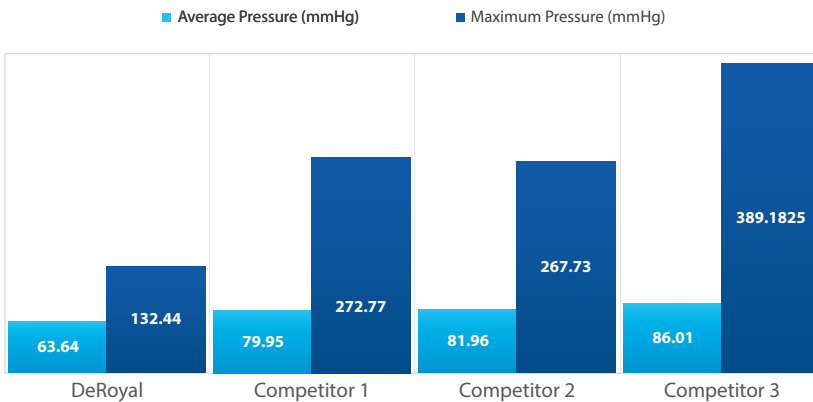
- Thicker & more robust than industry standard
- Helps mitigate foam “creep”
- Air channels promote breathability & moisture reduction



## Flexible Edges

- Flexible layer between foam & plastic
- Reduces pressure in key areas
- Sternal, clavicular, occipital, mandible

## Pressure Comparison\*



Statistical analysis utilized analysis of variance followed by post-hoc paired testing to identify significant differences. P-values were corrected for multiple comparisons using the Benjamini-Hochberg Method. The study found that the DeRoyal collar resulted in significantly lower average and maximum pressures than the other three tested collars ( $p < 0.026$ ). Competitor 2 exhibited a significantly lower p-value for maximum pressure than Competitor 3. These findings support the conclusion that the padding in the DeRoyal collar more effectively offloads contact pressure when exposed to an anatomical weighted head model.

\* Competitor collar padding comparisons were done using a flexible pressure sensor pad featuring a sensor grid configuration. The sensor pad was placed against a rigid surface and an anatomical weighted head model was placed on each competitor padding and allowed to rest for 5 minutes. The pressure map created was analyzed to capture average pressure over the contact surface along with the max pressure point at a single sensor point. Results in the graph are based on the average of 8 sample sites of each type of competitor padding.

Product No.	Description 1	Description 2	UOM	UOM1
11331000	Cervical Collar, Capital™ Advanced	Universal	EA	1
11332000	Cervical Collar, Capital™ Advanced	Universal, w/ Extra Pad Set	EA	1
11333000	Cervical Collar, Capital™ Advanced	Pad Set Only	EA	1
11341000	Cervical Collar, Capital™ Advanced	Universal, Wide Back	EA	1
11342000	Cervical Collar, Capital™ Advanced	Universal, Wide Back, w/ Extra Pad Set	EA	1
11343000	Cervical Collar, Capital™ Advanced	Wide Back, Pad Set Only	EA	1

