

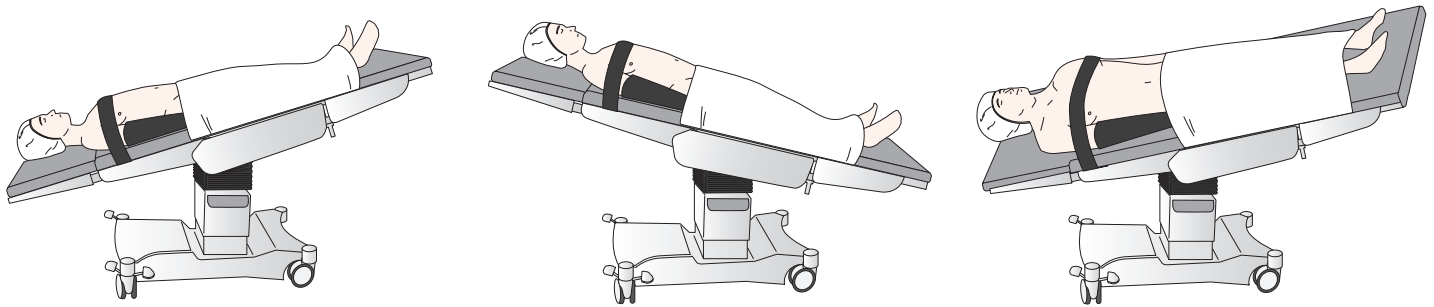
# STEEP-T<sup>®</sup>

Multi-Angle Patient Positioning System



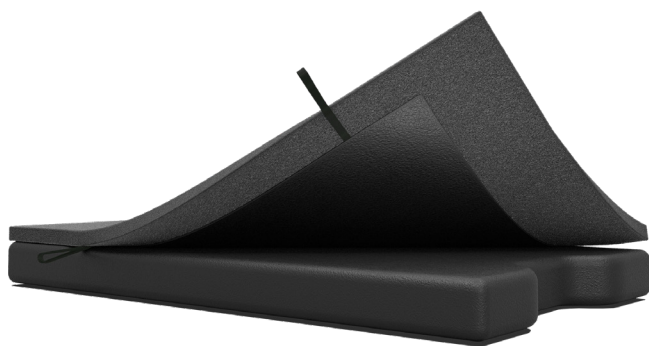
The STEEP-T® Multi-Angle Patient Positioning System provides patient fixation for procedures that require steep angulation of the operative table. The system helps to prevent unwanted movement of the patient during table position changes and prolonged periods of fixed steep angulation.

The STEEP-T® Positioning System decreases the potential for complications by providing superior support and fixation for greater patient protection.



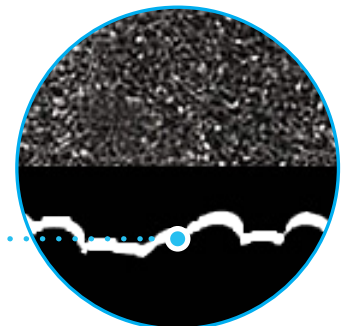
### Creating Optimal Fixation

The patient foam pad and table pad feature a non-skid material that provides thousands of points of extreme static grip as the two surfaces interlock.



The patient foam pad offers a cross-strapping configuration with handles that allow clinicians to reposition the patient on the OR table as needed for intubation and final surgical positioning.

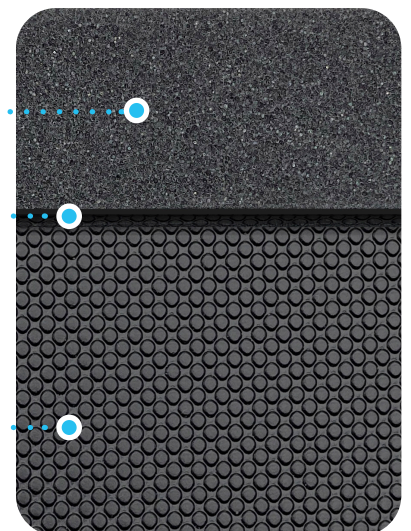
**Interlocking Surfaces**



**Foam Pad**

**Non-skid Backing**

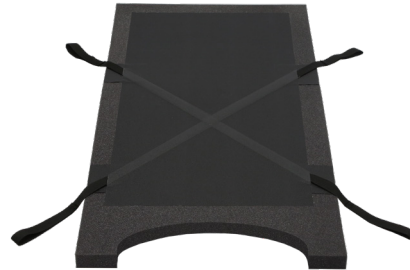
**Non-skid Surgical Table Mattress**



The STEEP-T® System is constructed of a high-density polyurethane foam that is cool and breathable for patient comfort. The STEEP-T® components are designed to be used as a system. Each component also has several independent indications for patient positioning in multiple surgical environments.

## Foam Positioning Pad

- Non-skid backing creates an interlocking action for superior fixation
- Cross-strapping with comfortable ergonomic handles for ease of secure re-positioning if needed



## Head Positioner

- Large radius neck roll allows for correct positioning of the head and neck
- Superior recovery position for airway management



## Wedged Arm Protectors

- Wedge design increases fixation and helps to off-load sacrum
- Hook and loop closure keeps arms protected and secure



## Arm Protection Pads

- Soft comfort foam provides protection to ulnar nerve and fingertips



# STEEP-T®

Multi-Angle Patient Positioning System



## M60-SF501 Kit

Product #	Description	Qty
M60-SF501	Kit Includes:	3/Cs
	Foam Lift Pad	1 Ea/Kit
	Head Positioner	1 Ea/Kit
	Scapular Wedges	1 Pr/Kit
	Arm Protectors	1 Pr/Kit
	Body Strap (3.75" x 42")	1 Ea/Kit
	Table Strap (3.75" x 60")	1 Ea/Kit



## M60-SF502 Kit

Product #	Description	Qty
M60-SF502	Kit Includes:	3/Cs
	Foam Lift Pad	1 Ea/Kit
	Scapular Wedges	1 Pr/Kit
	Arm Protectors	1 Pr/Kit
	Body Strap (3.75" x 42")	1 Ea/Kit
	Table Strap (3.75" x 60")	1 Ea/Kit



## M60-SF503 Kit

Product #	Description	Qty
M60-SF503	Kit Includes:	5/Cs
	Foam Lift Pad	1 Ea/Kit
	Body Strap (3.75" x 42")	1 Ea/Kit
	Table Strap (3.75" x 60")	1 Ea/Kit



## M60-SF505 Kit

Product #	Description	Qty
M60-SF505	Kit Includes:	3/Cs
	Foam Lift Pad	1 Ea/Kit
	Head Positioner	1 Ea/Kit
	Arm Protection Pads	1 Pr/Kit
	Lift Sheet	1 Ea/Kit
	Body Strap (3.75" x 42")	1 Ea/Kit
	Table Strap (3.75" x 60")	1 Ea/Kit



## Arm Protection Pads

Product #	Description	Qty
M60-SF018	Arm Pads 18"x25"	5 Pr/Cs