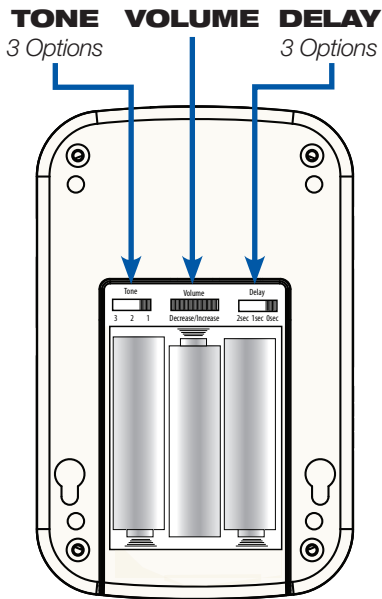
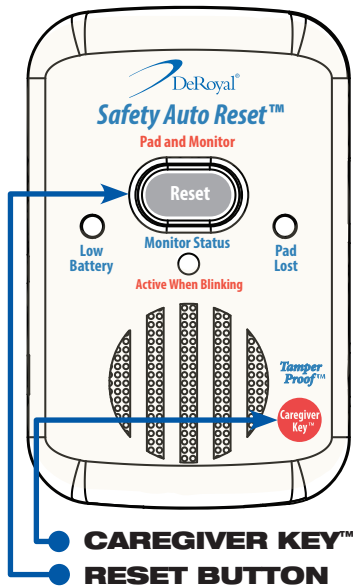




# Safety-Auto Reset Fall Monitor M2100-SL

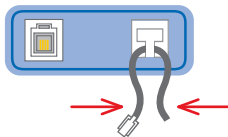
## QUICK REFERENCE CARD



# QUICK STEPS

## SETTING UP

1. Connect monitor to pad.\*
2. Put pressure on the pad.
3. Wait to hear two beeps.



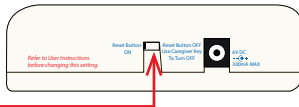
\* **Pinch the cord together and route it through the strain relief recess.**

## RESETTING (Two Options)

Select either

**“Reset Button ON”** or

**“Reset Button OFF”**



1. If **“Reset Button ON”**, use the reset button.



2. If **“Reset Button OFF”**, use the Caregiver Key™.



**NOTE:** Patient can reset fall monitor by sitting/laying down on sensor pad.

**WARNING:** Be sure to read all alarm and sensor instructions before use. Test system to ensure that it is working properly before leaving the patient unattended.

DeRoyal, DeRoyal logo, Improving Care. Improving Business., are registered trademarks of DeRoyal Industries, Inc.

Caregiver Key, Safety Auto-Reset and Tamper Proof are trademarks of The Smart Caregiver Corporation.

Copyright© 2018, DeRoyal. All rights reserved.



Improving Care. Improving Business.™

DeRoyal Industries | 200 DeBusk Lane | Powell, TN 37849  
888.938.7828 | 865.938.7828 | www.deroyal.com  
Rev 01/18 | Reprint # 0-2427