



Inline Pneumatic 2

WALKER BOOT

COMFORT for the way you **LIVE**

CONTROL for the way you **PLAY**

CONFIDENCE in how you **RECOVER**

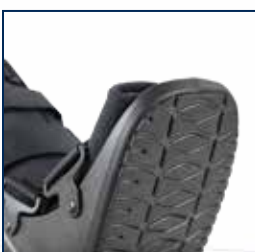
 DeRoyal®

Improving Care. Improving Business.™

Inline Pneumatic Walker 2

FEATURES & BENEFITS

- High quality rigid outer skeleton for superior protection.
- Dense foam liner to provide comfort and support.
- Shock absorbing embedded sole tread improves patient comfort and helps prevent slips.
- Rocker bottom to simulate natural gait.
- Plastic uprights help reduce ankle rotation and range of motion.
- Large air bladder creates a larger surface for contact pressure to help control swelling and ensure a snug, comfortable fit.



INDICATIONS: Moderate to severe ankle sprains and strains | Stable foot and/or ankle fractures | Syndesmosis sprain | Post ORIF | Achilles tendonitis

SIZE	MALE SHOE SIZE	FEMALE SHOE SIZE	STANDARD	SHORT
X-SMALL	up to 4 ½	up to 5 ½	15500031	15500036
SMALL	4 ½ - 7 ½	5 ½ - 8	15500032	15500037
MEDIUM	7 ½ - 10 ½	8 - 11 ½	15500033	15500038
LARGE	10 ½ - 12 ½	11 ½ - 13 ½	15500034	15500039
X-LARGE	12 ½ +	13 ½ +	15500035	15500040



Improving Care. Improving Business.®

DeRoyal Industries, Inc.
 200 DeBusk Ln | Powell, TN 37849
 888.938.7828 | www.deroyal.com
 Revision 6/14 | Reprint # 0-2346

